



Your
Number
ONE
Shipping
Partner

CONTAINER+

Visibility Built for Your Refrigerated Cargo

End-to-end monitoring for temperature-sensitive shipments



What is CONTAINER+?

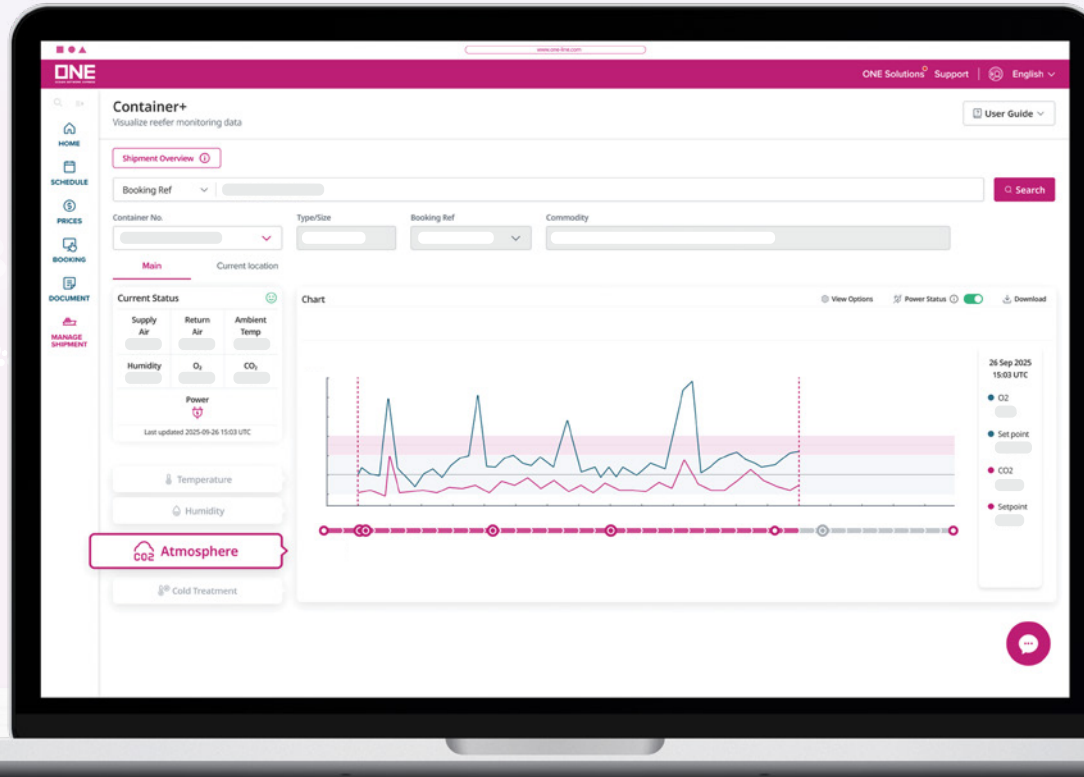
ONE's digital reefer monitoring system that provides near **real-time* condition data** through a single dashboard, giving shippers visibility into their temperature-sensitive cargo anytime, anywhere.

+5°C

O₂



CO₂



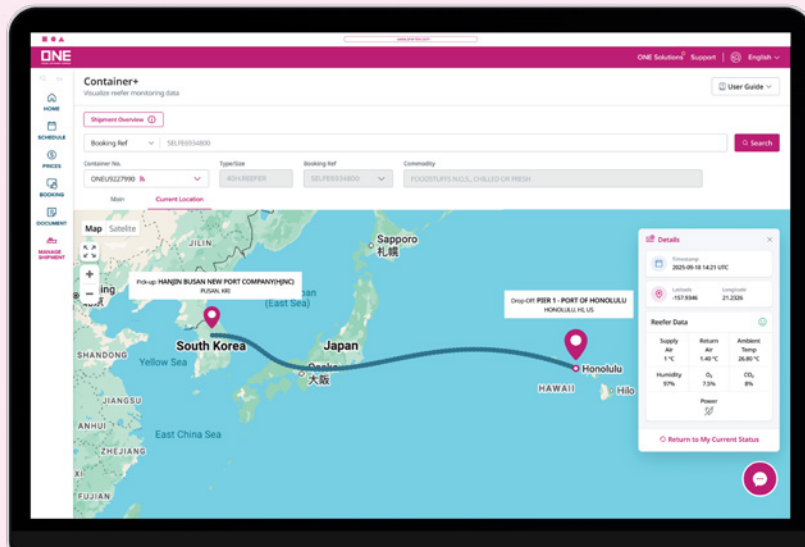
How does it work?

Manage your shipments with a tap

We operate one of the largest and most modern reefer fleets in the world. Keeping in mind the requirements needed for refrigeration units, we've designed our containers to offer higher payload capacity. This allows you to ship more efficiently, directly benefiting your bottom line.

GPS Map

See the route and container location on the map, both at sea and on land.



Full visibility at a glance

Conveniently view temperature, humidity, and atmosphere data on the graph.



Supply/return air monitoring

Closely monitor the supply and return air temperature inside the container.



Ambient temperature & humidity

Track temperature and humidity levels for a full environmental picture.



Power status

Get insights into data accuracy by tracking the reefer's active power status during its journey.

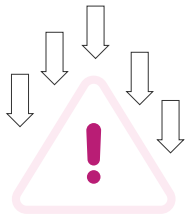


Advanced probes

Supports specialized monitoring for O₂/CO₂ (Controlled Atmosphere) and USDA probes (Cold Treatment).

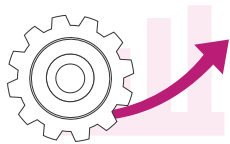
Why use CONTAINER+?

CONTAINER+ supports proactive risk management and informed decision-making for temperature-sensitive cargo across global supply chains.



Reduce cargo risk and potential losses

Identify deviations early and minimize the impact of temperature excursions.



Enable better operational and commercial decisions

Use historical shipment data to assess performance and optimize future planning.

Improve coordination across teams with a shared, trusted data source.



Expert support you can rely on

Rely on ONE's professional support team for guidance and assistance when needed.

FAQs

Is CONTAINER+ available on all trade lanes?

Yes, CONTAINER+ is available on all trade lanes. Speak to your local representative to find out more.

Can shipment data be downloaded after the voyage?

Yes. Shipment and monitoring data remains accessible for post-shipment reviews.

When does monitoring start and end?

Once the reefer is plugged into power, the IoT device will start to record data from the reefer controller, transmitting it to the platform. It will continue recording and transmitting data until the shipment is completed.

Who should I contact for activation or support?

You may contact your local sales representative or containerplus.support@one-line.com.

ONE
OCEAN NETWORK EXPRESS